



SonicFill™ 3

SingleFill™ Composite System

Step 1: Apply SonicFill™ 3 and sculpt.

Step 2: There is no step two.

SonicFill 3 SingleFill™ Composite System is a sonic-activated bulk fill composite system that helps you craft quality restorations with greater ease and speed compared to incremental layering technique.

Achieve long-lasting restorations in one efficient step.

The fewer the steps, the less chance of a misstep.

SonicFill™ 3 replaces conventional time-consuming, multi-stage layering techniques with a SingleFill Composite System that eliminates the need for placing a liner or final capping layer. And new advanced SonicFill 3 bulk fill features improved adaptation. It is even easier to handle, sculpt and polish, while also being simpler to extrude during placement, as compared to its predecessors. The end benefits are faster patient visits, more predictable results, and dependable, long-lasting restorations.

Single-Fill™
The True Single-Step
Bulk Fill up to 5MM



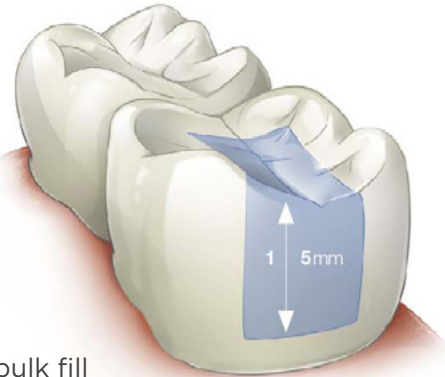
Traditional layering technique.
Several Layers.



Bulk fill flowable with universal cap.
Two Layers.



High viscosity bulk fill restorative with flowable liner.
Two Layers.

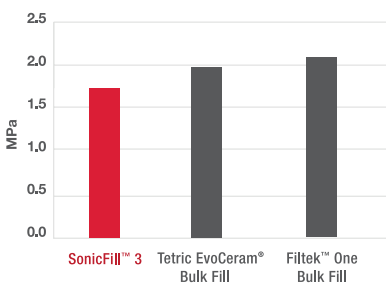


SonicFill™ System
Only One Layer

SonicFill 3. A step up from the rest.

Shrinkage Stress

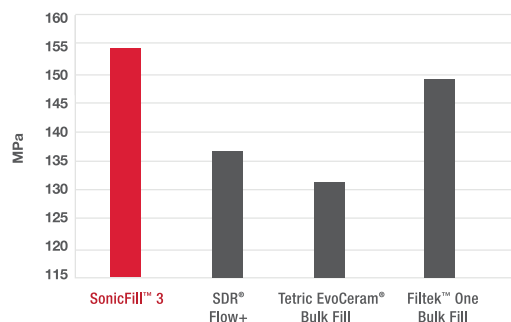
SonicFill 3 has a lower shrinkage stress than both Filtek™ One Bulk Fill and Tetric EvoCeram®.



*Shrinkage Stress at 2 minutes

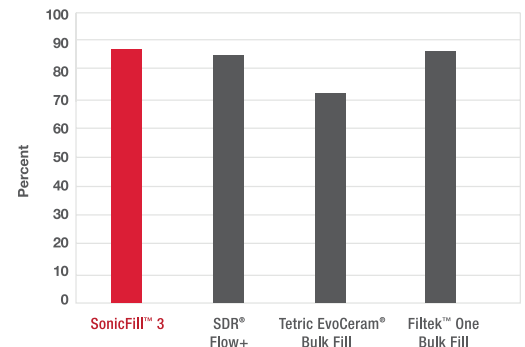
Flexural Strength

SonicFill 3 has a higher flexural strength than both SDR® Flow+ and Tetric EvoCeram® Bulk Fill.*



Degree of Conversion

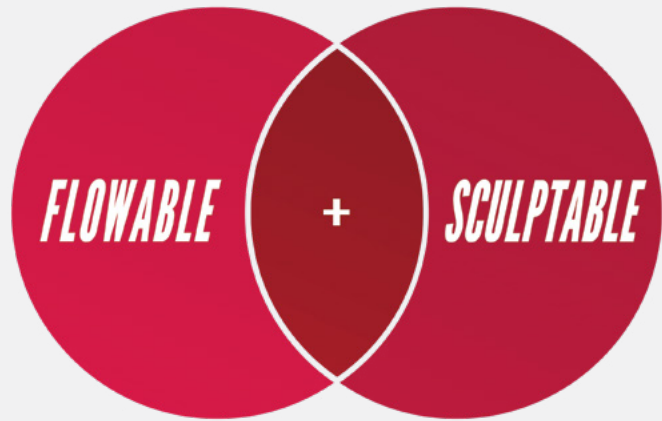
At 5mm, SonicFill 3 showed 86.6% hardness at the bottom when compared to the top.*



* Kerr Internal Test Data

The benefits of both flowable and sculpable composites in one.

New SonicFill 3 is a sonic-activated bulk fill composite that acts both as a flowable composite during placement, and as a non-sticky, easy to sculpt material after the sonic energy is removed.



Better adaptation to margins and internal walls.

Rheological modifiers react to the sonic energy applied during placement, reducing viscosity to increase flowability to all cavity surfaces. Most cavities are filled in seconds.

Low shrinkage stress.

To ensure lasting marginal integrity. Lower shrinkage stress can lead to void/gap free procedures and better outcomes.

Optimized formula is slump free.

Once the sonic energy is removed, the composite reverts to a viscous, pliable state ideal for contouring and polishing. The nano-scale zirconsil (zirconium oxide + silica oxide) filler system allows you to achieve excellent gloss, wear resistance and reliability.

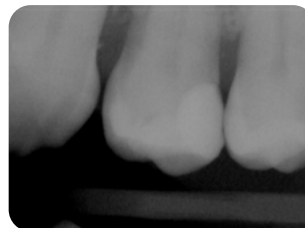
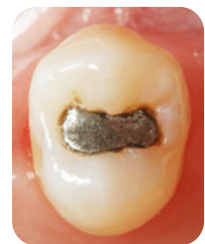
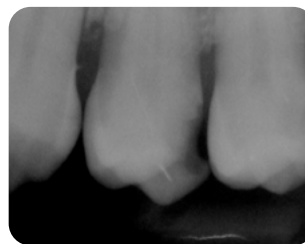
High depth of cure.

Refractive index matching and an enhanced curing mechanism allow polymerization depths up to 5mm in a single step, while still retaining opacity for esthetically-pleasing finishes.

Quality restorations that stand the test of time, in less time.

Crafting long-lasting restorations has never been easier or more efficient. New, advanced SonicFill 3 with its improved adaptation is already helping dentists perform restorative work with greater ease and accuracy, and with more predictable and reliable results, than ever before.

SonicFill 3 is indicated for direct placement in all cavity classes in anterior and posterior teeth. It's also indicated for minor occlusal build-ups and core build-up (Refer to the IFU for a complete list of indications).



Courtesy of Dr. Ron Jackson, DDS**

Courtesy of Dr. Simona Cuevas, DDS**

Amalgam replacement with SonicFill 3.

Premolar amalgam restored with SonicFill 3 and OptiBond™ Universal.

New, advanced SonicFill™ 3. A huge step forward in performance.

Ordering Information

36710 SonicFill™ 3 Intro Kit

The Intro Kit is an ideal way to get introduced to SonicFill 3. It contains a SonicFill Handpiece, a “Getting Started Kit”, a Technique Guide, and a total of 60 Unidose™ tips with 40 Unidose tips in A2, 10 Unidose tips in A1 and 10 Unidose tips in A3.

SonicFill 3 Unidose Refills

Each refill contains 20 Unidose tips each 0.25 g.

36711	SonicFill 3 Composite A1
36712	SonicFill 3 Composite A2
36713	SonicFill 3 Composite A3
36714	SonicFill 3 Composite B1

Handpiece and Accessories

35215	SonicFill Handpiece
35134	Kerr MULTIflex Coupling



Experience the new SonicFill 3 SingleFill Composite System in your practice. Call 800-KERR-123 or visit kerrdental.com/SonicFill for more information.



For esthetic anterior restorations, use any of the 30 available Harmonize™ Universal Composite shades, all designed to make your restorative work remarkably difficult to detect. Harmonize is engineered with the same rheological modifiers and fillers as SonicFill 3, for ease-of-handling and greater strength.

****DISCLAIMER:** The opinions expressed in the case studies are those of Dr. Jackson and Dr. Cuevas. Kerr is a medical device manufacturer and does not dispense medical advice. Clinicians should use their own professional judgment in treating their patients. Dr. Jackson and Dr. Cuevas are paid consultants of Kerr Corporation.

KAVO Kerr

PREFERRED
LOYALTY PROGRAM

Buy now. Earn rewards points.
Sign up at kavokerrpreferred.com

1-800-KERR-123 | kerrdental.com

MKT-18-0446 Rev 3 ©2022 Kerr Dental

Kerr™